

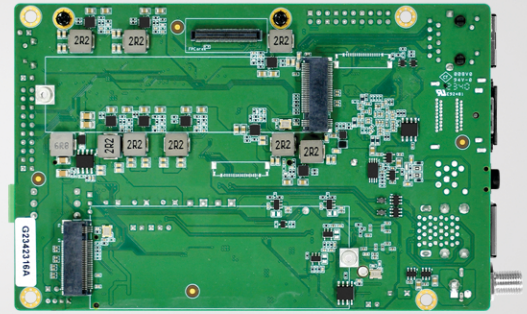
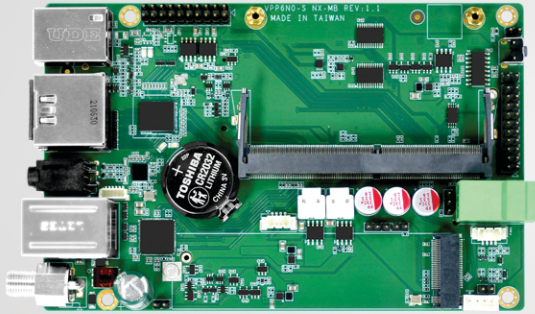


VPP6N0-S-MB NX

Phone: (626) 610-1888

Email: info@acmeportable.com

Web: www.acmeportable.com



Compact Edge AI Platform

CPU

Option 1: NVIDIA Jetson Orin™ NX 8GB
6-Core Arm® Cortex®-A78AE v8.2 64-Bit CPU
1.5MB L2 + 4MB L3

Option 2: NVIDIA Jetson Orin™ NX 16GB
8-Core Arm® Cortex®-A78AE v8.2 64-Bit CPU
2MB L2 + 4MB L3

AI PERFORMANCE

Option 1: NVIDIA Jetson Orin™ NX 8GB
70 TOPS

Option 2: NVIDIA Jetson Orin™ NX 16GB
100 TOPS

STORAGE

Supports External NVMe

EXPANSION SLOT

M.2
1xM.2 2280/3080 M Key PCIe Gen4x4 Slot
1xM.2 2280 M Key PCIe Gen4x2 Slot
1xM.2 2280 M Key PCIe Gen4x1 Slot

ETHERNET

1xRJ45 for 10/100/1000Mbps Ethernet
DHCP Client

AUDIO

1x Line In (3.5mm or Pin Header)
1x Line Out (3.5mm or Pin Header)

GRAPHICS CARD

1024-Core NVIDIA Ampere Architecture GPU
with 32 Tensor Cores

MEMORY

Option 1: NVIDIA Jetson Orin™ NX 8GB
8GB LPDDR5

Option 2: NVIDIA Jetson Orin™ NX 16GB
16GB LPDDR5

DISPLAY INTERFACE

2x HDMI2.0

USB

4xUSB3.2 Gen2 (Type-A)
1xUSB3.2 Gen1 (Pin Header)
1xUSB3.2 Gen1 (Pin Header, Without USB2.0)

MIPI

8xMIPI CSI-2 Lanes
(D-PHY 2.1, 2x4 | 4x2 | 1x4+2x2 MIPI Lanes,
Support MIPI Camera, Capture Card)

PERIPHERALS

1x RS232 (Phoenix Connector or Pin Header)
1x RS485 (Phoenix Connector or Pin Header)
4x GPIO (Pin Header)
3x I2C (Pin Header)